

# TrimPitch™



## Lead Edge Trim Solution

Lead edge trim in the load has been a problem as long as rotary dies have been built. In the past, if corrugated converters ran at good production speeds, it could almost be guaranteed there would be some lead edge trim mixed in between the diecuts within the stack. It is not unusual to see operators walk around a load of diecuts and pull out pieces of trim sticking out from the edge. For sure, there is a lot more trim in between the diecuts that can't be seen. For decades, every effort to solve the "lead edge trim in the load problem" has been pursued.

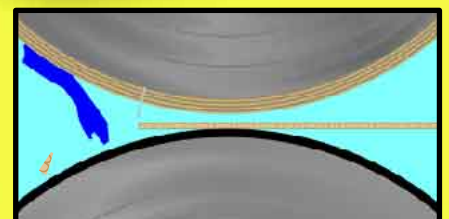
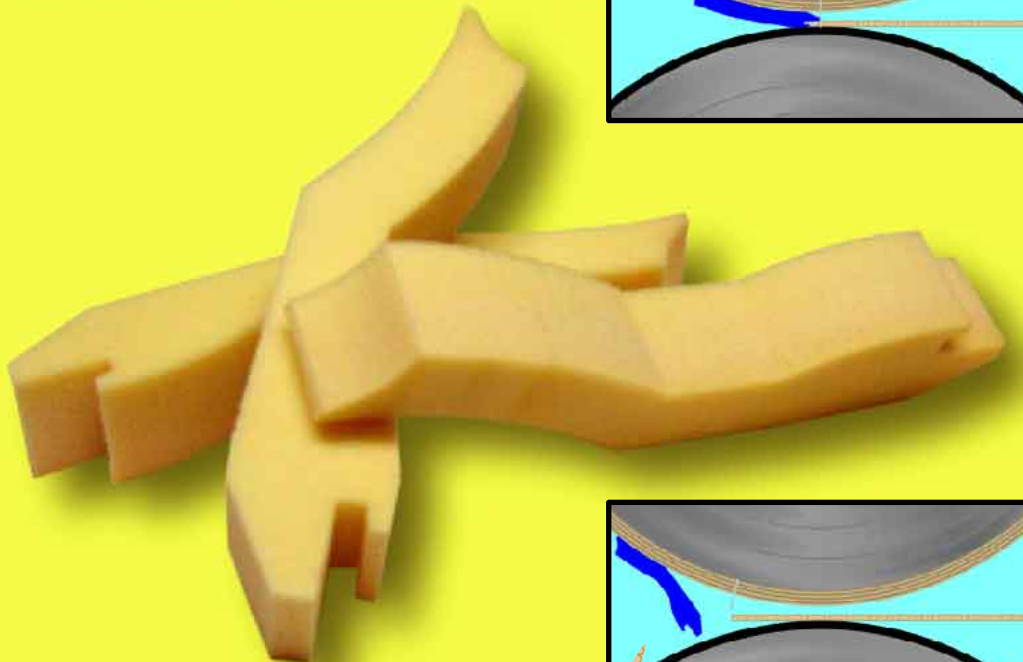
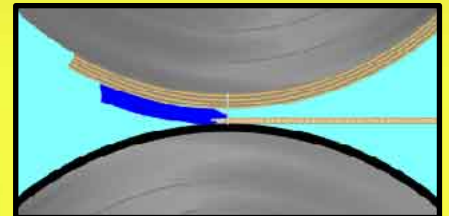
Container Graphics' new product for controlling lead edge trim on a rotary cutting die is called TrimPitch™. TrimPitch™ captures the lead edge of the corrugated sheet and defects going into the diecutter nip. Upon exit from the nip, TrimPitch™ springs back from its deflected position and pitches the lead edge trim almost straight down toward

the scrap conveyor belt. TrimPitch™ is not directional on press. The cylinder can be rotated backward during setup without doing damage to the TrimPitch™. It's made of a rubber-like urethane that is very tough and stands up to almost any kind of abuse and wear.

TrimPitch™ is very affordable and can increase productivity and quality in corrugated diecutting operations.

### Benefits:

- Manages Lead Edge Scrap
- Not Directional
- Cost Effective
- Durable



Container  
Graphics  
Corporation

www.containergraphics.com  
113 Edinburgh Drive South, Suite 110, • Cary, NC 27511  
(919) 481-4200 • FAX: (919) 469-4897

*Another Cost Effective Solution...*